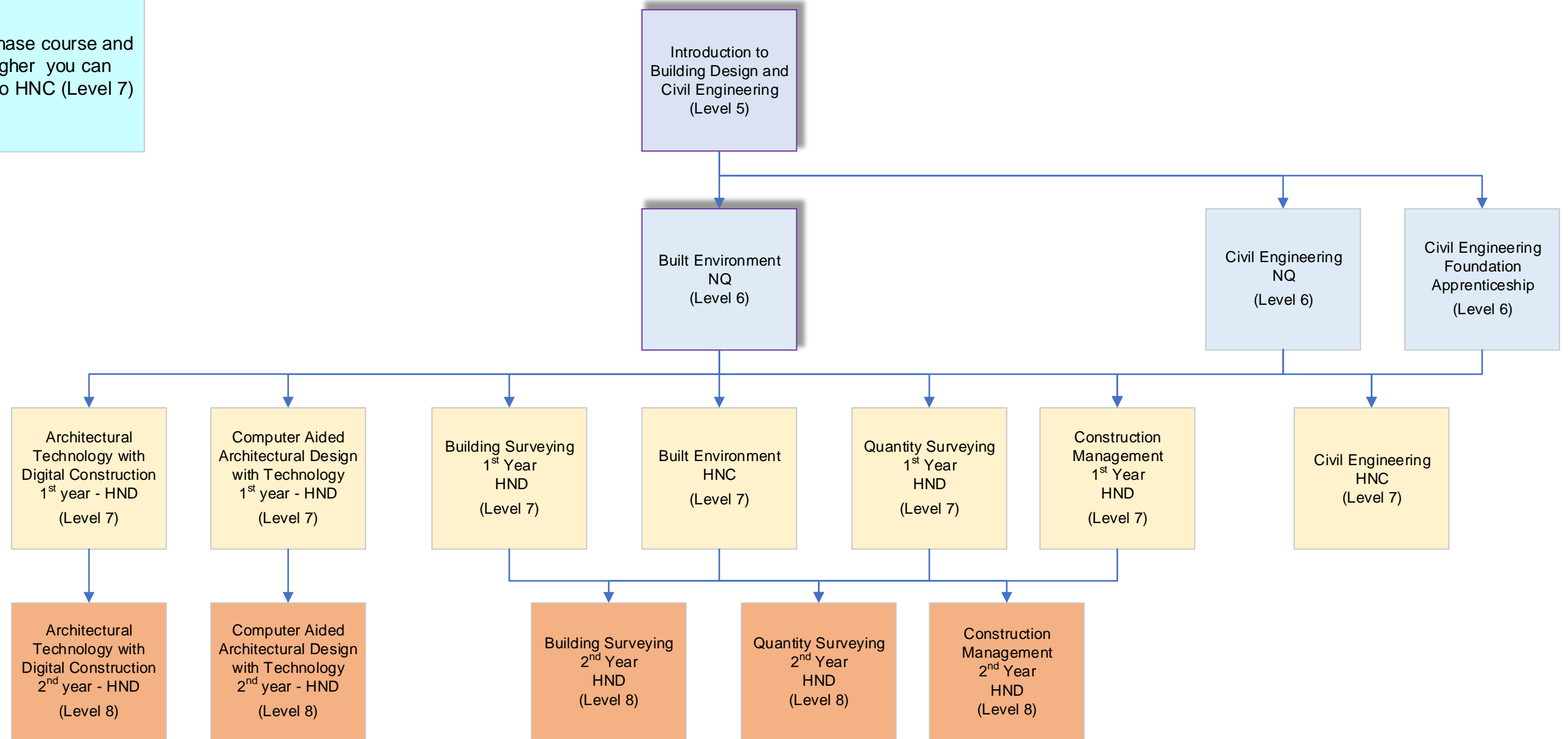


With the Senior Phase course and one relevant Higher you can progress directly to HNC (Level 7)



**Glasgow Caledonian University**

(Level 10)  
3<sup>rd</sup> Year Entry  
BSc (Hons) Construction Management

2<sup>nd</sup> Year Entry  
BSc (Hons) Environmental Civil Engineering

3<sup>rd</sup> Year Entry  
BSc (Hons) Building Surveying

3<sup>rd</sup> Year Entry  
BSc (Hons) Building Services

3<sup>rd</sup> Year Entry  
BSc (Hons) Quantity Surveying

[www.gcu.ac.uk](http://www.gcu.ac.uk)

**University of Strathclyde**

(Level 10)  
BEng (Hons) Civil Engineering

BSc (Hons) Education & Curricular Studies with Teaching Qualification (Technical)  
3<sup>rd</sup> Year Entry

[www.strath.ac.uk](http://www.strath.ac.uk)

---

**University of Glasgow**

(Level 9)  
BEng Civil Engineering

BEng Civil Engineering with Architecture

[www.glas.ac.uk](http://www.glas.ac.uk)

**University of West of Scotland**

(Level 10)  
2<sup>nd</sup> Year Entry  
BSc (Hons) Civil Engineering

3<sup>rd</sup> Year Entry  
BSc (Hons) Quantity Surveying

3<sup>rd</sup> Year Entry  
BSc (Hons) Architectural Technology

[www.uws.ac.uk](http://www.uws.ac.uk)

---

**Glasgow School of Art**

(Level 9)  
BArch Architectural Studies

[www.gsa.ac.uk](http://www.gsa.ac.uk)

**Heriot Watt University**

(Level 10)  
3<sup>rd</sup> Year Entry  
BSc (Hons) Construction Management and Surveying

3<sup>rd</sup> Year Entry  
BSc (Hons) Construction and the Built Environment

3<sup>rd</sup> Year Entry  
BSc (Hons) Quantity Surveying

3<sup>rd</sup> Year Entry  
BSc (Hons) Architectural Engineering

[www.hw.ac.uk](http://www.hw.ac.uk)

**Napier University**

(Level 10)  
3<sup>rd</sup> Year Entry  
BSc (Hons) Quantity Surveying

3<sup>rd</sup> Year Entry  
BSc (Hons) Architectural Technology

3<sup>rd</sup> Year Entry  
BEng (Hons) Civil Engineering

[www.hw.ac.uk](http://www.hw.ac.uk)

Note: All courses are subject to change