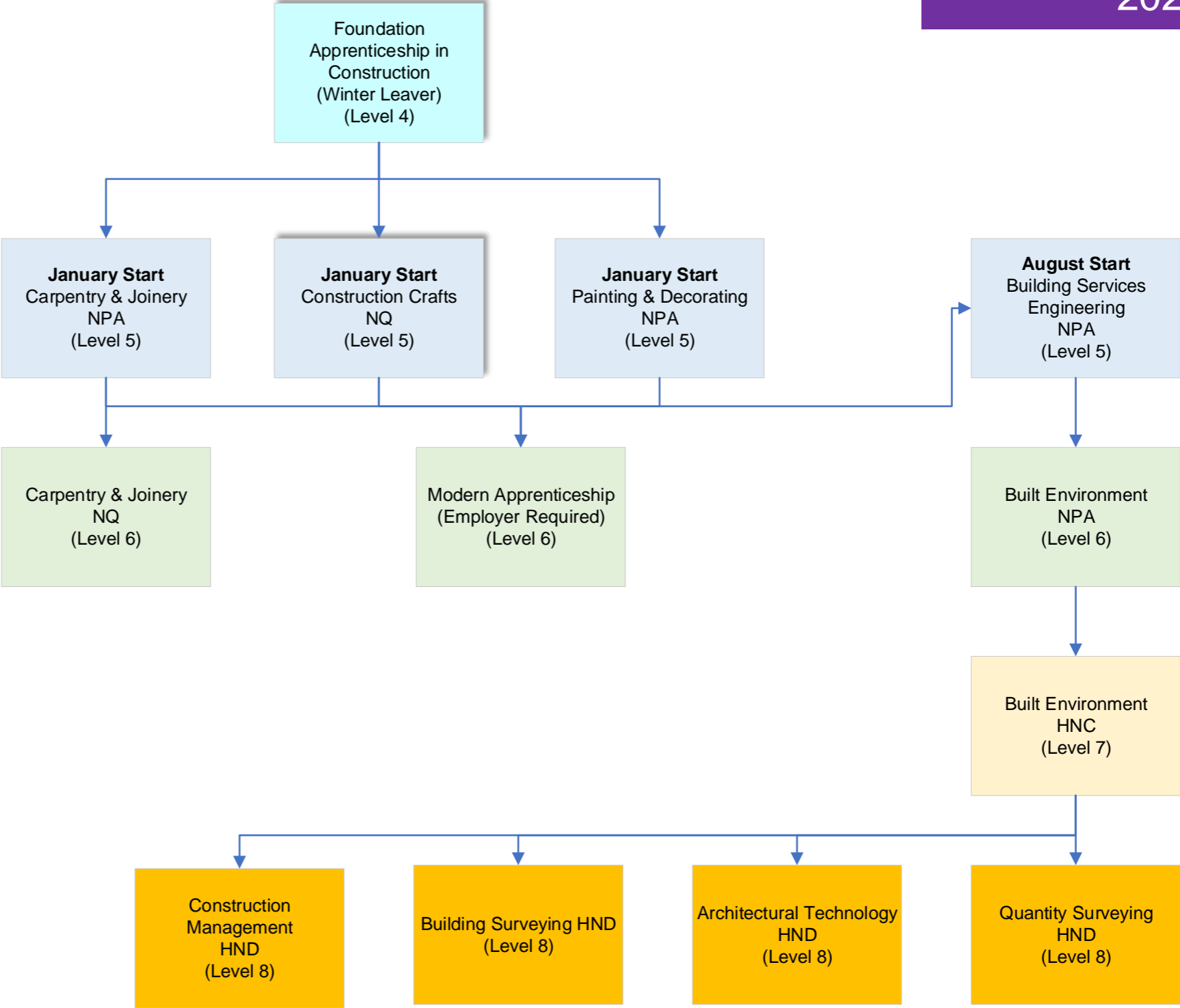


# Foundation Apprenticeship in Construction (Winter Leaver)

2024-25

Note: you can progress directly to level 6 courses with additional qualifications.



**Glasgow Caledonian University**  
 BSc (Hons) Construction Management  
 BSc (Hons) Environmental Civil Engineering  
[www.gcu.ac.uk](http://www.gcu.ac.uk)

**Robert Gordon University**  
 BSc (Hons) Quantity Surveying and Commercial Management  
[www.rgu.ac.uk](http://www.rgu.ac.uk)

**Heriot Watt University**  
 BSc (Hons) Construction and the Built Environment  
 BSc (Hons) Quantity Surveying and Commercial Management  
[www.hw.ac.uk](http://www.hw.ac.uk)

**Edinburgh Napier University**  
 BSc (Hons) Construction & the Built Environment (Graduate Apprenticeship)  
[www.napier.ac.uk](http://www.napier.ac.uk)

Note: All courses are subject to change

