

Board of Management People & Culture Committee

Date of Meeting	Tuesday 13 February 2024
Paper No.	PCC2-I
Agenda Item	6.4
Subject of Paper	Public Bodies Climate Change Reporting Duties Report 2022-23
FOISA Status	Disclosable
Primary Contact	Fergal McCauley – Head of Facilities
Date of production	5 February 2024
Action	For Noting

1. Recommendations

1.1 To Note the Report.

2. Purpose

2.1 This paper is for information.

3. Key Insights

3.1 Carbon emissions have increased from 4880 to circa 8443 tCO₂e. This is as a result of adding all supply chain emissions using the Higher Education Supply Chain Emissions Tool (HESCET).

3.2 Scottish Funding Council Outcome Agreement 2023-24 Priority area 5: Net zero and environmental sustainability response

Institutions should provide commentary of up to one page on implementing a whole-institutional climate emergency response across all key areas of activity and may wish to refer to current sector voluntary benchmarking frameworks. They should also include key operational measures undertaken in the current cycle or planned in the next towards compliance with the Scottish Government public sector carbon reporting and reduction guidance Public Sector Leadership on the Global Climate Emergency (October 2021).

We expect institutions to have or to put in place organisation-wide net zero and sustainability plans by the end of the calendar year 2024 if these do not already exist and to be able to highlight key priorities and dates for delivery of these. In the OA:

- Institutions should provide the net zero target and commentary or data on progress in implementing a whole-institutional climate emergency response under each of the following areas including key priorities, linking with the UN Sustainable Development Goal (SDG) 13 “climate action” and other SDGs as appropriate: learning and teaching; skills; research, innovation and entrepreneurship; estates and supply chains; partnerships and place making; institutional governance and leadership; staff and student engagement and participation.*
- Institutions must profile their total estimated or actual baseline greenhouse gas emissions arising from their total operations and activities, any institution-specific net zero target, and a summary of emissions totals under scope group 1 and scope group 2 and for scope 3 business travel emissions. This relates to institutions’ contributions under the Climate Change (Scotland) Act 2009 and related legislation*

4. Impact and Implications

4.1 It is a mandatory requirements that the Collee submit an annual report under the Climate Change (Emissions Reduction Targets) (Scotland) Act 2019.

4.2 Failure to comply could result in loss of funding as the College is required to fulfil all aspects of the Scottish Funding Council Outcome Agreement.

Appendices

Public Bodies Climate Change Duties Report 2022-23.

Public Bodies Climate Change Duties Compliance Reporting Template 2022/23

1. Overview

This template is provided for public bodies required to report annually in accordance with the Climate Change (Duties of Public Bodies Reporting Requirements) (Scotland) Order 2015, as amended by the Climate Change (Duties of Public Bodies: Reporting Requirements) (Scotland) Amendment Order 2020 which took effect for reporting periods commencing on or after 1 April 2021. Reports must be submitted to ccreporting@ed.ac.uk by **30th November**. Late submissions will not be accepted for analysis and may be deemed non-compliant with Public Bodies Duties reporting requirements.



2. Guidance

1. The "Profile of Body" tab must be completed before proceeding to add any other data.
2. Question 1f must be completed to ensure the correct emission factors are applied in Q3b.
3. If you need to add more rows in any table please email the file ccreporting@ed.ac.uk
4. More emission factors from the UK Government (DESNZ) release have been included this year. When completing Q3b you can filter by the Emission Type dropdown in column C.
5. Please only use the "Other" emission source rows (130 onwards) when there is no relevant emission source in the dropdown lists or if you have bespoke data/emission factors. Please provide a brief explanation in the comment field.
6. The water supply and sewage emission factors are based on Scottish Water's carbon intensities of service supply, one of the lowest in the UK water industry. If you still wish to use the UK DESNZ (formerly BEIS) factors (which are more than double) you will need to enter consumption data in an "Other" row.
7. Some auto-checks have been added to improve the quality of data entries, e.g. correct emission scopes where only one category ever applies.
8. More detailed reporting guidance is available [on the SSN website.](#)

3. Colour Coding used in the template

	Dropdown box - select from list of options
	Uneditable/fixed entry cell
	Editable cell

Public Sector Report on Compliance with Climate Change Duties 2023 Template

PART 1 Profile of Reporting Body

1a Name of reporting body

Provide the name of the listed body (the "body") which prepared this report.

City of Glasgow College

1b Type of body

Select from the options below

Educational Institution

1c Highest number of full-time equivalent staff in the body during the report year

1059 **THIS MUST BE COMPLETED**

1d Metrics used by the body

Specify the metrics that the body uses to assess its performance in relation to climate change and sustainability.

Metric	Units	Value	Comments
Floor area	m2	68245.00	
Number of full-time equivalent students	number FTS	14240.00	
Please select from drop down box			
Please select from drop down box			
Please select from drop down box			
Please select from drop down box			
Please select from drop down box			
Please select from drop down box			
Other (please specify in comments)	Other (See comments)	2178.60	Degree Days for 2022/23 obtained from www.degree-days.net (value for Glasgow)
Other (please specify in comments)			
Other (please specify in comments)			
Other (please specify in comments)			
Other (please specify in comments)			
Other (please specify in comments)			

1e Overall budget of the body

Specify approximate £/annum for the report year.

Budget

Budget Comments

£96,975,000 Total income including grants, tuition fees, investment income, etc..

1f Report type

Specify the report year type

Report type

Report year comments

Academic 01/08/2022 - 31/07/2023 **THIS MUST BE COMPLETED**

1g Context

Provide a summary of the body's nature and functions that are relevant to climate change reporting.

Educational establishment consisting of 2 Campuses within the city centre of Glasgow.

The curriculum comprises of 4 Faculties:

1. Creative Industries
2. Education and Humanities
3. Hospitality and Leisure
4. Nautical and STEM

These are supported by the following Directorates: Corporate Development, People & Corporate Support, Brand and Communications; Business, International, Innovation & STEM; Finance, Procurement; Information Technology; Performance; Planning and Executive Office; and Student Experience.

Environmental Sustainability Working Group, set up in April 2017, continues to drive the aims and objectives of the Sustainability Strategy.

PART 2 Governance, Management and Strategy

Governance and management

2a How is climate change governed in the body?

Provide a summary of the roles performed by the body's governance bodies and members in relation to climate change. If any of the body's activities in relation to climate change sit outside its own governance arrangements (in relation to, for example, land use, adaptation, transport, business travel, waste, information and communication technology, procurement or behaviour change), identify these activities and the governance arrangements. Provide a diagram / chart to outline the governance structure within the body.

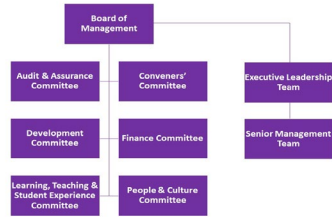
Depute Principal and Chief Operating Officer is a Climate Commission Council Institutional member.

Sustainability Strategy 2021-30 approved and published on the College website.

Finance & Physical Resources Committee monitors delivery of Sustainability Strategy.

Environmental Sustainability Working Group set up in April 2017 consisting of members from each Faculty, Directorate and Students Association ensuring wide coverage throughout the College.

College recognise and continue to support environmental element within the Glasgow Region Outcome Agreement.

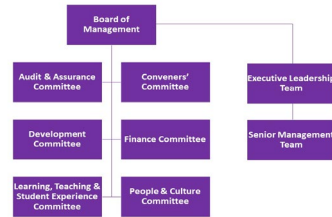


2b How is climate change action managed and embedded in the body?

Provide a summary of how decision-making in relation to climate change action by the body is managed and how responsibility is allocated to the body's senior staff, departmental heads etc. If any such decision-making sits outside the body's own governance arrangements (in relation to, for example, land use, adaptation, transport, business travel, waste, information and communication technology, procurement or behaviour change), identify how this is managed and how responsibility is allocated outside the body. Provide a diagram to show how responsibility is allocated to the body's senior staff, departmental heads etc.

The work and recommendations of the Environmental Sustainability Working Group is fed back regularly by the Head of Facilities Management to the Support Services Committee. A written report is also sent to the People & Culture committee 3 times per annum.

The College were successful in securing a Campus Cycling Officer via Cycling Scotland who networked externally with partners in driving active travel solutions.



Strategy

2c Does the body have specific climate change mitigation and adaptation objectives in its corporate plan or similar document?

Provide a brief summary of objectives if they exist.

Wording of objective	Name of document	Document Link
----------------------	------------------	---------------

Through efficiency and planned change we will address the impact of the climate emergency on industry and society.	Strategic Plan 2021-30	https://view.pagetiger.com/strategic-plan-21-30/v1
Our aim is to support sustainable productivity and clean industry via a developed curriculum, including support for renewable energy and industrial biotechnology.	Strategic Plan 2021-30	https://view.pagetiger.com/strategic-plan-21-30/v1
The College will implement a green action plan, including a renewed travel policy, with direct impact on our environmental footprint. We will seek to influence as an environmentally responsible civic lead organisation. The travel policy will consider safety concerns as a priority. City of Glasgow College will be an ethical consumer with a (net) zero carbon emissions target in the short-term.	Strategic Plan 2021-30	https://view.pagetiger.com/strategic-plan-21-30/v1

2d Does the body have a climate change plan or strategy?

If yes, provide the name of any such document and details of where a copy of the document may be obtained or accessed.

Strategic Plan 2021-30 - College Website - <https://view.pagetiger.com/strategic-plan-21-30/v1>
Sustainability Strategy 2021-30 - <https://www.cityofglasgowcollege.ac.uk/sites/default/files/Sustainability%20Strategy%202021.pdf>

The College utilise the Climate Action Roadmap for FE Colleges as a guide.

2e Does the body have any plans or strategies covering the following areas that include climate change?

Provide the name of any such document and the timeframe covered.

Topic area	Name of document	Link	Time period covered	Comments
Adaptation				
Business travel	Strategic Plan Sustainability Strategy	https://view.pagetiger.com/strategic-plan-21-30/v1 https://www.cityofglasgowcollege.ac.uk/sites/default/files/Sustainability%20Strategy%202021.pdf	2021-30 2021-30	
Staff Travel	Strategic Plan Sustainability Strategy Green Travel Plan	https://view.pagetiger.com/strategic-plan-21-30/v1 https://www.cityofglasgowcollege.ac.uk/sites/default/files/Sustainability%20Strategy%202021.pdf	2021-30 2021-30 2023-26 (Draft)	
Energy efficiency	Strategic Plan Sustainability Strategy	https://view.pagetiger.com/strategic-plan-21-30/v1 https://www.cityofglasgowcollege.ac.uk/sites/default/files/Sustainability%20Strategy%202021.pdf	2021-30 2021-30	
Fleet transport	Strategic Plan Sustainability Strategy Green Travel Plan	https://view.pagetiger.com/strategic-plan-21-30/v1 https://www.cityofglasgowcollege.ac.uk/sites/default/files/Sustainability%20Strategy%202021.pdf	2021-30 2021-30 2023-26 (Draft)	
ICT	Strategic Plan Sustainability Strategy	https://view.pagetiger.com/strategic-plan-21-30/v1 https://www.cityofglasgowcollege.ac.uk/sites/default/files/Sustainability%20Strategy%202021.pdf	2021-30 2021-30	
Renewable energy	Strategic Plan Sustainability Strategy	https://view.pagetiger.com/strategic-plan-21-30/v1 https://www.cityofglasgowcollege.ac.uk/sites/default/files/Sustainability%20Strategy%202021.pdf	2021-30 2021-30	
Sustainable/renewable heat	Strategic Plan Sustainability Strategy	https://view.pagetiger.com/strategic-plan-21-30/v1 https://www.cityofglasgowcollege.ac.uk/sites/default/files/Sustainability%20Strategy%202021.pdf	2021-30 2021-30	
Waste management	Strategic Plan Sustainability Strategy	https://view.pagetiger.com/strategic-plan-21-30/v1 https://www.cityofglasgowcollege.ac.uk/sites/default/files/Sustainability%20Strategy%202021.pdf	2021-30 2021-30	
Water and sewerage	Strategic Plan Sustainability Strategy	https://view.pagetiger.com/strategic-plan-21-30/v1 https://www.cityofglasgowcollege.ac.uk/sites/default/files/Sustainability%20Strategy%202021.pdf	2021-30 2021-30	
Land Use				
Other (please specify in comments)				

2f What are the body's top 5 priorities for climate change governance, management and strategy for the year ahead?

Provide a brief summary of the body's areas and activities of focus for the year ahead.

1. To ensure Financial Sustainability meeting all statutory and governance requirements and supporting a positive and innovative student experience.
2. To secure diversity of income and sustainable development.
3. To integrate environmental and social considerations into the procurement process, with the goal of reducing adverse impacts upon social conditions and the environment, and thereby making valuable savings for the College and the community at large.
4. To ensure that the College maintains and enhances sound environmental management policies and practices, working to improve its environmental impact.
5. Development of climate action plan detailing our journey to net zero by 2040 in line with the Public Sector Leadership on the Global Climate Emergency.

2g Has the body used the Climate Change Assessment Tool (a) or equivalent tool to self-assess its capability / performance?

If yes, please provide details of the key findings and resultant action taken.

(a) This refers to the tool developed by Resource Efficient Scotland for self-assessing an organisation's capability / performance in relation to climate change.

The Environmental Sustainability Working Group utilised this tool in assessing the Colleges capability / performance in driving improvements resulting in a reduction of our impact on the environment. Result for 2022/23 was 84%.

Key findings:

Governance

1d - Consider whether key external reports or the underlying dataset would benefit from an external audit process, even if this was a one-off event and subsequently peer-review was continued.

1e - Widen the scope of the assessment to include climate change adaptation and look at positive ways for climate change actions to positively reinforce other organisational objectives.

1f - Draw up and implement a communication strategy for the wider area, including partners and the public. Apply ISM approach and principles to communication strategy to ensure balance of focus across all three behavioural contexts - individual, social and material.

1g - Widen scope of performance improvement to include climate change adaptation.

Adaptation

3f - For the policies where our organisation is named as a delivery partner, develop an action plan to help deliver these policies. This is likely to require partnership working with other public bodies. For organisations with significant responsibilities, the policies should be assessed and prioritised before putting together action plans.

Behaviour

4a - Draw up a list of basic climate change mitigation and adaptation actions, including resource efficiency, that are appropriate to all staff. Work with HR and staff representatives to get these incorporated into job descriptions. Consider using ISM approach and principles to ensure that desired behaviours are supported in individual, social and material contexts.

4b - Investigate and implement mechanisms for communication of climate change actions for temporary and agency staff and provide support for staff to be proactive in identifying ways to increase resource efficiency and managing risk. Consider using ISM approach and principles to ensure that desired behaviours are supported in individual, social and material contexts.

4e - Look at ways to extend the range of services that are assessed for climate change impacts. Aim to devolve some responsibility for developing and delivering these service improvement plans to departmental level. Look at ways to monitor and evaluate the impact of the service improvement plans and involve external partners where appropriate. Consider using ISM approach and principles in collaboration with external partners, where appropriate, to help identify behavioural barriers and target actions.

Procurement

5a - Implement the Proposed Actions required to meet the Level 3 (Practice) criteria across the 5 categories (People, Policy, Process, Suppliers, Results).

Further information

2h Supporting information and best practice

Provide any other relevant supporting information and any examples of best practice by the body in relation to governance, management and strategy.

Public Sector Report on Compliance with Climate Change Duties 2023 Template

PART 3 Corporate Emissions, Targets and Project Data

Emissions

Enissions from the start of the year which the body uses as a baseline (for its carbon footprint) to the end of the report year

Complete the following table using the greenhouse gas emissions total for the body calculated on the same basis as for its annual carbon footprint / management reporting or, where applicable, its sustainability reporting. Include greenhouse gas emissions from the body's estate and operations (a) measured and reported in accordance with Sopes 1 & 2 and, to the extent applicable, selected Scope 3 of the Greenhouse Gas Protocol (B). If data is not available for any year from the start of the baseline year to the end of the report year, provide an explanation in the comments column.

(a) No information is required on the effect of the body on emissions which are not from its estate and operations.

(b) This refers to "The greenhouse gas protocol: A corporate accounting and reporting standard (revised edition)", World Business Council for Sustainable Development, Geneva, Switzerland / World Resources Institute, Washington DC, USA (2004), ISBN: 1-56973-568-9

INQUIRY QUESTION IS COMPLETED BEFORE STARTING THIS SECTION, THEN SELECT APPROPRIATE BASELINE YEAR. TOTAL EMISSIONS IN THE MOST RECENT FOOTPRINT YEAR IN THIS QUESTION SHOULD EQUAL TOTAL EMISSIONS IN OUR

Reference year	Year	Year type	Scope 1	Scope 2	Scope 3	Total	Unit	Comments
Baseline Year	2015/16							
Year 1 carbon footprint	2016/17	Academic	2,665.00	3,199.00	45.00	5,909.00	TCO ₂ e	
Year 2 carbon footprint	2017/18	Academic	2,331.00	2,568.00	683.00	5,582.00	TCO ₂ e	
Year 3 carbon footprint	2018/19	Academic	2,400.00	2,300.00	570.00	5,270.00	TCO ₂ e	
Year 4 carbon footprint	2019/20	Academic	2,254.00	2,060.00	502.00	4,816.00	TCO ₂ e	
Year 5 carbon footprint	2020/21	Academic	2,185.00	1,573.00	247.00	3,965.00	TCO ₂ e	
Year 6 carbon footprint	2021/22	Academic	2,152.00	1,710.00	675.00	3,937.00	TCO ₂ e	
Year 7 carbon footprint	2022/23	Academic	2,280.10	1,931.00	1,776.30	4,987.40	TCO ₂ e	
Year 8 carbon footprint	2022/23	Academic	3,899.16	4,498.21	5,107.11	8,443.39	TCO ₂ e	

Breakdown of emissions sources

Complete the following table with the breakdown of emissions sources from the body's most recent carbon footprint (greenhouse gas inventory); this should correspond to the last entry in the table in 3a) above. Use the 'Comments' column to explain what is included within each category of emission source entered in the first column. If there is no data consumption available for an emission source enter the emissions in the 'Consumption' column of one of the 'Other' rows and assign the scope and an emission factor of 1.

(a) Emission factors are published annually by the UK Department for Business, Energy & Industrial Strategy

Emission Factor Year

2023

The emission factor year is auto-assigned based on your answer to Q17. If it is incorrect please contact SSN.

You can now filter emission sources by 'Type' in column C to enable quicker selection of emission source in column D.

Use defined emission sources can be entered in rows 1-60 onwards. Please only use those if you cannot find a relevant emission source in the dropdown list or you have a bespoke emission factor or non-standard derivation of emissions e.g. based on a survey/consumption data. If you require extra rows in the table please send the template to corpro@ed.ac.uk.

Method an emission source can be found under the 'Process' Emission Type. The UK Emission Factor for Biomethane has now been provided in the dropdown list.

Land Use & Land Use Change emissions can be included where data/estimate are available.

Emission Type	Emission source	Scope	Consumption data	Units	Emission factor	Units	Emissions (TCO ₂ e)	Comments
Electricity	Electricity - UK	Scope 2	6,050,245	kWh	0.2071	kg CO ₂ /kWh	1,252,712	
Electricity	Transmission and distribution - Electricity - UK	Scope 3	6,900,245	kWh	0.0790	kg CO ₂ /kWh	545,144	TCO ₂ e in Scope 2 - 100% Weight
Fuels	Natural gas	Scope 1	10,169,763	kWh	0.1820	kg CO ₂ /kWh	1,850,793	
Fuels	Marine gas oil	Scope 1	361	litres	2.7738	kg CO ₂ /litres	1,000	Diesel Engine
Fuels	Gas oil	Scope 1	166	litres	2.7544	kg CO ₂ /litres	457	Generators
Fuels	Diesel (average fuel/tonne)	Scope 1	218	tonnes	2.5725	kg CO ₂ /tonnes	561	Eng Engines
Water	Water supply	Scope 3	36,400	public metres	0.1000	kg CO ₂ /cubic metres	3,640	
Water	Water treatment	Scope 3	36,124	public metres	0.1000	kg CO ₂ /cubic metres	3,612	
Waste	Plastics (PET (incl. beverage) - Recycled)	Scope 3	170	tonnes	21.2626	kg CO ₂ /tonnes	3,612	Mixed Waste
Waste	Organic food and drink waste - Anaerobic digestion	Scope 3	13	tonnes	8.3720	kg CO ₂ /tonnes	0.110	
Waste	Energy construction - Recycled	Scope 3	178	tonnes	0.1203	kg CO ₂ /tonnes	21.4	CAD and Fluorobond
Waste	Metal scrap metal - Recycled	Scope 3	5	tonnes	21.2801	kg CO ₂ /tonnes	0.116	
Waste	Paper and board paper - Recycled	Scope 3	2	tonnes	21.2801	kg CO ₂ /tonnes	0.047	Confidential Paper
Waste	WEEE - mixed - Recycled	Scope 3	2	tonnes	21.2801	kg CO ₂ /tonnes	0.047	Public and Equipment
Waste	Commercial and industrial waste - Combustion	Scope 3	2	tonnes	21.2801	kg CO ₂ /tonnes	0.047	
Waste	Glass - Recycled	Scope 3	2	tonnes	21.2801	kg CO ₂ /tonnes	0.047	
Waste	Wood - Recycled	Scope 3	23	tonnes	21.2801	kg CO ₂ /tonnes	0.490	Includes Pallets
Transport - public	Bus/coach	Scope 3	7	km	0.3064	kg CO ₂ /km	2.145	
Transport - car	Average car - Unknown	Scope 3	35,423	km	0.1664	kg CO ₂ /km	5,895	Grey Fleet and Hire Car
Transport - van/mv	Business Travel Van - Class III (1.74 to 3.5 tonnes) - Battery Electric Vehicle	Scope 1	2,044	km	0.0890	kg CO ₂ /km	0.182	College Electric Van
Transport - car	Business Travel Car - Battery Electric Vehicle	Scope 1	36,342	km	0.0626	kg CO ₂ /km	2,274	College Electric Car
Transport - public	Flights - Domestic (to/from UK - Average passenger)	Scope 3	44,014	passenger km	0.2726	kg CO ₂ /passenger km	12,000	
Transport - public	Flights - Short-haul (to/from UK - Average passenger)	Scope 3	362,085	passenger km	0.1850	kg CO ₂ /passenger km	67,000	
Transport - public	Flights - Long-haul (to/from UK - Average passenger)	Scope 3	177,278	passenger km	0.3618	kg CO ₂ /passenger km	64,300	
Transport - public	Regional rail	Scope 3	96,255	passenger km	0.0504	kg CO ₂ /passenger km	4,850	Business Rail Travel
Refrigerants	HFC-class	Scope 1	-8	kg	1305.0000	kg CO ₂ /kg	10.4	
Refrigerants	Hydrofluorocarbon (office equipment + heating)	Scope 3	263,606	FTE Working hour	0.3378	kg CO ₂ /FTE Working hour	89,100	
Refrigerants	None listed - UK	Scope 3	883	kg	0.0000	kg CO ₂ /kg	0.0	
Transport - public	Coach	Scope 3	10,634	passenger km	0.0774	kg CO ₂ /passenger km	820	Coach Hire
Transport - public	Midland rail	Scope 3	2,216,289	passenger km	0.0946	kg CO ₂ /passenger km	210,000	Rail Commuting
Transport - public	Local bus (not London)	Scope 3	657,477	passenger km	0.1188	kg CO ₂ /passenger km	78,000	Staff Commuting
Transport - car	Average car - Unknown	Scope 3	4,117,729	km	0.1664	kg CO ₂ /km	683,000	Staff Commuting
Transport - public	MidV car and train	Scope 3	29,474	passenger km	0.0986	kg CO ₂ /passenger km	2,900	Staff Commuting
Transport - car	Motorbike - Average	Scope 3	20,015	km	0.1187	kg CO ₂ /km	2,370	Staff Commuting
Transport - public	Midland rail	Scope 3	6,198,001	passenger km	0.0946	kg CO ₂ /passenger km	584,000	Student Commuting
Transport - public	Local bus (not London)	Scope 3	879,297	passenger km	0.1188	kg CO ₂ /passenger km	104,000	Student Commuting
Transport - car	Average car - Unknown	Scope 3	2,162,286	km	0.1664	kg CO ₂ /km	360,000	Student Commuting
Transport - public	MidV car and train	Scope 3	86,367	passenger km	0.0986	kg CO ₂ /passenger km	8,500	Student Commuting
Transport - car	Motorbike - Average	Scope 3	86,341	km	0.1187	kg CO ₂ /km	10,200	Student Commuting
Transport - public	Flights - International (to/from non-UK - Average passenger)	Scope 3	493,177	passenger km	0.1839	kg CO ₂ /passenger km	90,700	Student Commuting
Transport - public	Bus/coach	Scope 3	77,770	km	0.3064	kg CO ₂ /km	23,800	Student Commuting
Other	Other (please specify in comments)	Scope 1					104,000	HFCET - Estates
Other	Other (please specify in comments)	Scope 3					2,643,143	HFCET - Libraries & Labs
Other	Other (please specify in comments)	Scope 3					35,019	HFCET - Staff
Other	Other (please specify in comments)	Scope 3					135,045	HFCET - Professional Services
							8,443,394	

Total is different to that number quoted in Q3a, please check and/or state why in comments cell above

Generation, consumption and export of renewable energy

Provide a summary of the body's annual renewable generation (if any), and whether it is used or exported by the body.

Technology	Renewable Electricity	Renewable Heat	Comments
	Total consumed by the body (kWh)	Total generated (kWh)	Total consumed by the body (kWh)
	Total exported (kWh)	Total generated (kWh)	Total exported (kWh)
Solar PV		54,619	
Solar Thermal		13,584	

Targets

Organisational targets

List all of the body's targets of relevance to its climate change duties. Where applicable, targets for reducing indirect emissions of greenhouse gases, overall carbon targets and any separate land use, energy efficiency, waste, water, information and communication technology, transport, travel and heat targets should be included. Where applicable, you should also provide the body's target date for achieving zero direct emissions of greenhouse gases, or such other targets that demonstrate how the body is contributing to Scotland achieving its emissions reduction targets.

Name of target	Type of target	Target	Units	Boundary/Scope of target	Year used as baseline	Baseline figure	Units of baseline	Target completion year	Progress against target	Comments
Greenhouse Gas Emissions	Absolute	Net Zero by 2040	CO ₂ e reduction	All emissions	2015/16	5,909	TCO ₂ e	2030/40	8,443	Revised due to capture of additional Scope 1 and 2 emissions
Reduce electrical consumption	Percentage	5% per annum	kWh reduction	Energy use in buildings	2019/19	7,824,966	kWh	2022/23	6,920,245	
Reduce gas consumption	Percentage	2% per annum	kWh reduction	Energy use in buildings	2019/19	11,982,216	kWh	2022/23	10,169,763	
Reduce water consumption	Percentage	2% per annum	litres reduction	Water and drainage	2019/19	33,650	litres	2022/23	36,000	Increased due to fault with rain water recycling system
Reduce waste	Percentage	2% per annum	tonnes reduction	Waste	2019/19	584	tonnes	2022/23	598	

How will the body align its spending plans and use of resources to contribute to reducing emissions and delivering its emission reduction targets?

Provide any relevant supporting information that is not already included elsewhere in this report.

Energy Learning Quarter (ELQ) through the Non-Profit Distribution (NPD) contract, will support the College in its Net Zero targets and responsibilities, working in a pragmatic and collaborative manner whilst making the best of opportunities available within the contractual framework. ELQ is committed to facilitating a positive outcome for the College, ELQ and its investors, lenders and supply chain.

How will the body publish, or otherwise make available, its progress towards achieving its emission reduction targets?

Provide any other relevant supporting information: In the event that the body wishes to refer to information already published, provide information about where the publication can be accessed.

Simply referencing this report or its availability on the SSN website is insufficient information. The College will publish a link to the SSN climate report page for City of Glasgow College which demonstrates our progress since reporting year 2015/16. The College will also develop and publish a climate action plan to summarise progress and detail future actions/targets to align with our Sustainability Strategy and our net zero ambitions.

Projects and changes

Estimated total annual carbon savings from all projects implemented by the body in the report year

If no projects were implemented against an emissions source, enter "0".
 If the body does not have any information for an emissions source, enter "Unknown".
 If the body does not include the emissions source in its carbon footprint, enter "N/A".

Emissions source	Total estimated annual carbon savings (tCO ₂ e)	Comments
Electricity		
Natural gas		
Other heating fuels		
Waste		
Water and sewerage		
Travel		
Heat Transport		
Other (please specify in comments)		
Total		

31 Detail the top 10 carbon reduction projects to be carried out by the body in the report year

Provide details of the 10 projects which are estimated to achieve the highest carbon savings during report year.

Project name	Leading source	Has full year of tCO ₂ e savings	Are these savings (tCO ₂ e) estimated or actual?	Capital cost (£)	Operational cost (£/annum)	Project lifetime (years)	Primary fuel/emissions source saved	Estimated carbon savings per year (tCO ₂ e/annum)	Estimated costs savings (£/annum)	Behaviour Change	Comments
		Please select from drop down box	Please select from drop down box				Please select from drop down box			Please select from dropdown box	

32 Estimated decrease or increase in the body's emissions attributed to factors (not reported elsewhere in this form) in the report year
 If the emissions increased or decreased due to any such factor in the report year, provide an estimate of the amount and direction

Emissions source	Total estimated annual emissions (tCO ₂ e)	Increase or decrease in emissions	Comments
Estate changes		Please select from drop down box	
Secure acquisition		Please select from drop down box	
Staff numbers		Please select from drop down box	
Other (please specify in comments)		Please select from drop down box	
Total			

33 Anticipated annual carbon savings from all projects implemented by the body in the year ahead

If no projects are expected to be implemented against an emissions source, enter "0".
 If the organisation does not have any information for an emissions source, enter "Unknown".
 If the organisation does not include the emissions source in its carbon footprint, enter "N/A".

Emissions source	Total estimated annual carbon savings (tCO ₂ e)	Comments
Electricity		
Natural gas		
Other heating fuels		
Waste		
Water and sewerage		
Travel		
Heat Transport		
Other (please specify in comments)		
Total		

34 Estimated decrease or increase in emissions from other sources in the year ahead

If the body's corporate emissions are likely to increase or decrease for any other reason in the year ahead, provide an estimate of the amount and direction.

Emissions source	Total estimated annual emissions (tCO ₂ e)	Increase or decrease in emissions	Comments
Estate changes		Please select from drop down box	
Secure acquisition		Please select from drop down box	
Staff numbers		Please select from drop down box	
Other (please specify in comments)		Please select from drop down box	
Total			

35 Total carbon reduction project savings since the start of the year which the body used as a baseline for its carbon footprint

If the body has data available, estimate the total emissions savings made from projects since the start of that year ("the baseline year").

Total savings	Total estimated emissions savings (tCO ₂ e)	Comments
Total project savings since baseline year		

Further information

36 Supporting information and best practice

Provide any other relevant supporting information and any examples of best practice by the body in relation to corporate emissions, targets and projects.

PART 4 Adaptation - please do not include information in this part on measures that solely reduce emissions with no implications for climate adaptation. These are climate mitigation measures which should be reported in the Emissions tab.

Assessing and managing risk

4a Has the body assessed current and future climate-related risks?
If yes, provide a reference or link to any such risk assessment(s).

Environmental Sustainability Working Group updated the climate change assessment tool with a result of 84%. Further action within 2023/24 has been identified:

3f - For the policies where our organisation is named as a delivery partner, develop an action plan to help deliver these policies. This is likely to require partnership working with other public bodies. For organisations with significant responsibilities, the policies should be assessed and prioritised before putting together action plans.

The College also completed a climate change risk assessment. Copy of risk assessment available on request.

4b What arrangements does the body have in place to manage climate-related risks?
Provide details of any climate change adaptation strategies, action plans and risk management procedures, and any climate change adaptation policies which apply across the body.

A climate change risk assessment was completed in 2021/22 and reviewed annually. All risks are under control and minimised to an acceptable level.

Taking action

4c What action has the body taken to adapt to climate change?
Include details of work to increase awareness of the need to adapt to climate change and build the capacity of staff and stakeholders to assess risk and implement action. The body may wish to make reference to the Scottish Climate Change Adaptation Programme ("the Programme").

Further to result of climate change risk assessment, there is further work required to improve this area and will be carried out over from 2022/23.

The climate change assessment tool was updated with a result of 84%. Further action within 2023/24 has been identified:

3f - For the policies where our organisation is named as a delivery partner, develop an action plan to help deliver these policies. This is likely to require partnership working with other public bodies. For organisations with significant responsibilities, the policies should be assessed and prioritised before putting together action plans.

4d Where applicable, what contribution has the body made to helping deliver the Programme?
Provide any other relevant supporting information

Review, monitoring and evaluation

4e What arrangements does the body have in place to review current and future climate risks?
Provide details of arrangements to review current and future climate risks, for example, what timescales are in place to review the climate change risk assessments referred to in Question 4(a) and adaptation strategies, action plans, procedures and policies in Question 4(b).

The climate change risk assessment will be reviewed annually by the Environmental Sustainability Working Group.

The action from the climate change assessment tool will be addressed in 2023/24.

4f What arrangements does the body have in place to monitor and evaluate the impact of the adaptation actions?

Please provide details of monitoring and evaluation criteria and adaptation indicators used to assess the effectiveness of actions detailed under Question 4(c) and Question 4(d).

The Environmental Sustainability Working Group will review the climate change risk assessment already completed and will refresh the climate change assessment tool at the end of 2023/24.

Future priorities for adaptation

4g What are the body's top 5 climate change adaptation priorities for the year ahead?

Provide a summary of the areas and activities of focus for the year ahead.

Further to a refresh of the climate change assessment tool, there is further work required to improve this area and will be carried out over 2023/24. This includes the following priority:

3f - For the policies where our organisation is named as a delivery partner, develop an action plan to help deliver these policies. This is likely to require partnership working with other public bodies. For organisations with significant responsibilities, the policies should be assessed and prioritised before putting together action plans.

The College will also review and complete the Adaptation Scotland's Starter Pack and Benchmarking Tool to further establish any actions related to climate change.

Further information

4h Supporting information and best practice

Provide any other relevant supporting information and any examples of best practice by the body in relation to adaptation.

Empty text box for providing supporting information and best practice.

PART 5 Procurement

5a How have procurement policies contributed to compliance with climate change duties?

Provide information relating to how the procurement policies of the body have contributed to its compliance with climate changes duties.

Climate change actions plans are now in place for 5 key category areas of spend - ICT, Food, Hair & Beauty, Catering and Travel. These action plans have assisted in identifying carbon reduction initiatives with actions being put in place for each category area providing more focus on how we measure, monitor and manage our scope 3 carbon emissions. These were created collaboratively with lead stakeholders, key suppliers and APUC Ltd.

The College ensures compliance with the Procurement Reform (Scotland) Act 2014 aligning it with our strategic outcomes as detailed in our Procurement Strategy 2020 – 2022 - https://www.cityofglasgowcollege.ac.uk/sites/default/files/CoGC_Procurement_Strategy.pdf. A key element of the legislation requires the College to meet the Sustainable Procurement Duty.

"The Sustainable Procurement Duty – in compliance with the Act the College will give consideration to the environmental, social and economic issues relating to all regulated procurements and how benefits can be accrued, on a contract-by-contract basis by taking proportionate actions to involve SME's, third sector bodies and supported businesses in our procurement activities and in so doing benefit not only the College but the wider West Central Scotland. To support compliance with the duty the College will endeavour to make use available tools and systems such as the Scottish Public Procurement Prioritisation Tool, the Sustainability Test, Life Cycle Impact Mapping, the Scottish Flexible Framework as well as APUC's Code of Conduct, Sustain and Electronics Watch where relevant and proportionate to the scope of the procurement." – Extract from City of Glasgow College, Procurement Strategy 2020 – 2022.

Within our newly revised Procurement Policy we make a commitment to climate and circular economy ambitions to improve environmental wellbeing. To assist in this commitment Procurement staff together with the internal stakeholders will;

- Leverage buying power when buying goods, services or works, to champion innovation, future-proofed solutions; enabling businesses and the Third Sector to engage in supporting our climate ambitions to deliver against our climate targets. By working with markets, we can stimulate the development of circular economy and low emission supply chains and solutions.
- Work collaboratively across departments to align climate-related policies, targets, milestones and supporting activities.
- Be climate literate and to have an appreciation of how contracting activity can support net-zero aims for the College and Scotland as a whole. Capturing and driving opportunities to contribute to climate change ambitions through procurement activity.

It is recognised that our external Supply Chain Partners make a significant contribution to carbon, therefore, the College strongly support engagement between budget managers and Procurement in the early development stages of projects to enable decisions on whether to buy; what we buy and how we buy.

Whether to buy: Academic and Support areas are encouraged to revisit and re-think their needs. Perhaps goods, services or works can be used for longer, refurbished or repaired. Consideration should be given to the residual value of goods which can be sold or donated.

What we buy: Specifications must consider the College's climate ambitions and targets. Consideration must be given to purchasing refurbished, repaired or pre-used, rather than new. Specifications must be future proofed to allow for refurbishment, remanufacture and repair, as well as supporting emerging technology.

5b How has procurement activity contributed to compliance with climate change duties?

Provide information relating to how procurement activity by the body has contributed to its compliance with climate changes duties.

All procurement staff have completed Carbon emission and circular economy training and we are now working with an outside provider to deliver training to non-procurement professionals. This training will help staff understand where improvements can be made within existing and future purchases and also question their need to purchases in the first place.

Our Head of Procurement is a member of the Scottish Government Climate and Procurement Forum as the FE representative. This group covers the following work streams - Strategy & Objectives, People & Capability, Supplier & Market Engagement, Operation Procurement, Monitoring and Reporting. Although a relatively new group our Head of Procurement has already obtained very useful knowledge and best practise from our sector representatives and will be at the forefront of any developments and implementations.

Some examples of contract specific objectives that have currently been achieved are as follows:

Zero plastic catering provision. Our catering providers no longer sell beverages in plastic bottles nor supply straws, plastic cutlery, sauce sachets, etc...

The college have installed a food composter to reduce food wastage. This is utilised by our catering providers.

Supply of unboxed products to reduce waste through our Hair & Beauty Kits supplier College Kits Direct.

Sustainable Salon Training for students and staff via our Colour House contract with L'Oreal i.e. reducing temperature of water when washing hair, low settings on styling tools, etc...

Climate Change Awareness eLearning Module - In addition we have created a new procurement focused climate change elearning module which will be shared with the wider sector. The module covers the following - What is Climate Change?, Net Zero Target by 2040, Our Roles in Promoting Sustainable Practices, Circular Economy; and Progress So Far. The eModule will encourage staff to adopt more sustainable and responsible buying practices, educate them on climate change and better understand their contribution to achieve Net Zero by 2040. Although the module is not yet live and we cannot evidence achieved benefits yet, the efforts to date and collaboration involved should be recognised.

Embedding SDGs - We have embedded the Sustainable Developments Goals (SDGs), both internally and externally, by aligning procurement processes and requirements i.e., Modern Slavery, Fair Work Practises and ED&I. This asserted our commitment to achieving these further by communicating to internal stakeholders and suppliers on how our contracts contribute to 'transforming the world'. A recent bidder noted: "seeing the SDGs in the tender made us curious to look into this more. It helped us understand what SDGs were, how we can contribute and how we can embed them in our own processes."

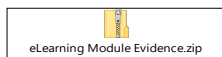
Further information

5c Supporting information and best practice

Provide any other relevant supporting information and any examples of best practice by the body in relation to procurement.

eLearning Module - DRAFT

Examples of embedding SDG's in Standardised tender templates



Public Sector Report on Compliance with Climate Change Duties 2023 Template

PART 6 Validation and Declaration

6a Internal validation process

Briefly describe the body's internal validation process, if any, of the data or information contained within this report.

Fergal McCauley, Head of Facilities Management acted as Project Lead in coordinating data compilation for the creation of this report. The report was shared, reviewed and updated further to review by members of the College's Environmental Sustainability Working Group (ESWG) and Senior Management Team. The document is only accessible by the Project Lead to ensure it is secure. The document is also saved in another format and is saved securely along with supporting information on a secure twin site shared drive.

6b Peer validation process

Briefly describe the body's peer validation process, if any, of the data or information contained within this report.

City of Glasgow College took part in an EAUC-Scotland organised peer review on Tuesday 14 November 2023. As part of the peer review, City of Glasgow College and Glasgow School of Art completed a review of both reports.

6c External validation process

Briefly describe the body's external validation process, if any, of the data or information contained within this report.

N/A

6d No Validation Process

If any information provided in this report has not been validated, identify the information in question and explain why it has not been validated.

N/A

6e Declaration

I confirm that the information in this report is accurate and provides a fair representation of the body's performance in relation to climate change.

Name:	Fergal McCauley
Role in the body:	Head of Facilities Management
Date:	28/11/2023

Other Notable Reportable Activity

(5) Please detail key actions relating to Food and Drink, Biodiversity, Water, Procurement and Resource Use in the table below

Key Action Type	Key Action Description	Organisation's Project Role	Impacts	Comments
Please select from drop down box		Please select from drop down box		
Please select from drop down box		Please select from drop down box		
Please select from drop down box		Please select from drop down box		
Please select from drop down box		Please select from drop down box		
Please select from drop down box		Please select from drop down box		
Please select from drop down box		Please select from drop down box		
Please select from drop down box		Please select from drop down box		
Please select from drop down box		Please select from drop down box		
Please select from drop down box		Please select from drop down box		
Please select from drop down box		Please select from drop down box		
Please select from drop down box		Please select from drop down box		
Please select from drop down box		Please select from drop down box		
Please select from drop down box		Please select from drop down box		
Please select from drop down box		Please select from drop down box		
Please select from drop down box		Please select from drop down box		
Please select from drop down box		Please select from drop down box		
Please select from drop down box		Please select from drop down box		
Please select from drop down box		Please select from drop down box		
Please select from drop down box		Please select from drop down box		
Please select from drop down box		Please select from drop down box		
Please select from drop down box		Please select from drop down box		

(6) Please use the text box below to detail further climate change related activity that is not noted elsewhere within this reporting template